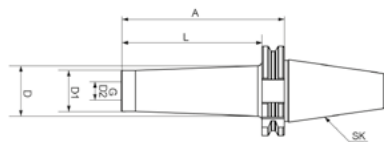


DIN 69871

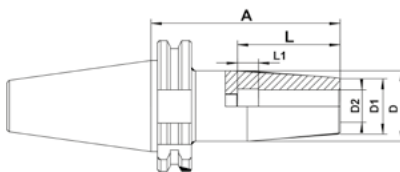
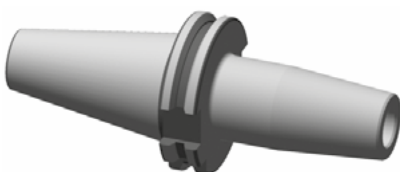
11
11.4



Gewuchtet G = 6,3 15.000 U/min.
Balanced G = 6,3 15.000 U/min.

| Größe / Size | G | D2 mm | D1 mm | D mm | A mm | L mm | Art.-Nr. / Order no. | EUR |
|--------------|-----|-------|-------|------|------|------|----------------------|--------|
| SK 50 | M8 | 8,5 | 13 | 23 | 69 | 50 | 13-FASK50-M8-50 | 80,20 |
| SK 50 | M8 | 8,5 | 13 | 25 | 119 | 100 | 13-FASK50-M8-100 | 95,70 |
| SK 50 | M10 | 10,5 | 18 | 23 | 69 | 50 | 13-FASK50-M10-50 | 80,20 |
| SK 50 | M10 | 10,5 | 18 | 32 | 119 | 100 | 13-FASK50-M10-100 | 95,70 |
| SK 50 | M12 | 12,5 | 21 | 24 | 69 | 50 | 13-FASK50-M12-50 | 80,20 |
| SK 50 | M12 | 12,5 | 21 | 33 | 119 | 100 | 13-FASK50-M12-100 | 95,70 |
| SK 50 | M12 | 12,5 | 21 | 40 | 169 | 150 | 13-FASK50-M12-150 | 103,00 |
| SK 50 | M16 | 17 | 29 | 34 | 69 | 50 | 13-FASK50-M16-50 | 80,20 |
| SK 50 | M16 | 17 | 29 | 36 | 119 | 100 | 13-FASK50-M16-100 | 95,70 |
| SK 50 | M16 | 17 | 29 | 43 | 169 | 150 | 13-FASK50-M16-150 | 103,00 |

Schrumpffutter DIN 69871 Shrink chuck DIN 69871



Gewuchtet G = 2,5 25.000 U/min.
Balanced G = 2,5 25.000 U/min.

| Größe / Size | D2 mm | D1 mm | D mm | L mm | L1 mm | A mm | Art.-Nr. / Order no. | EUR |
|--------------|-------|-------|------|------|-------|------|----------------------|--------|
| SK 40 | 3 | 10 | 20 | 15 | - | 80 | 13-SHFSK40-3-80 | 105,70 |
| SK 40 | 3 | 10 | 20 | 15 | - | 120 | 13-SHFSK40-3-120 | 123,90 |
| SK 40 | 4 | 15 | 22 | 15 | - | 80 | 13-SHFSK40-4-80 | 88,70 |
| SK 40 | 4 | 15 | 22 | 15 | - | 120 | 13-SHFSK40-4-120 | 108,00 |
| SK 40 | 5 | 15 | 22 | 20 | - | 80 | 13-SHFSK40-5-80 | 88,70 |
| SK 40 | 5 | 15 | 22 | 20 | - | 120 | 13-SHFSK40-5-120 | 108,00 |
| SK 40 | 6 | 20 | 27 | 36 | 10 | 80 | 13-SHFSK40-6-80 | 75,50 |
| SK 40 | 6 | 20 | 27 | 36 | 10 | 120 | 13-SHFSK40-6-120 | 92,50 |
| SK 40 | 8 | 20 | 27 | 36 | 10 | 80 | 13-SHFSK40-8-80 | 75,50 |
| SK 40 | 8 | 20 | 27 | 36 | 10 | 120 | 13-SHFSK40-8-120 | 92,50 |
| SK 40 | 10 | 24 | 31 | 41 | 10 | 80 | 13-SHFSK40-10-80 | 75,50 |
| SK 40 | 10 | 24 | 31 | 41 | 10 | 120 | 13-SHFSK40-10-120 | 92,50 |
| SK 40 | 12 | 24 | 31 | 47 | 10 | 80 | 13-SHFSK40-12-80 | 75,50 |
| SK 40 | 12 | 24 | 31 | 47 | 10 | 120 | 13-SHFSK40-12-120 | 92,50 |
| SK 40 | 14 | 27 | 34 | 47 | 10 | 80 | 13-SHFSK40-14-80 | 75,50 |
| SK 40 | 16 | 27 | 34 | 50 | 10 | 80 | 13-SHFSK40-16-80 | 75,50 |
| SK 40 | 16 | 27 | 34 | 50 | 10 | 120 | 13-SHFSK40-16-120 | 92,50 |
| SK 40 | 16 | 27 | 34 | 50 | 10 | 160 | 13-SHFSK40-16-160 | 108,00 |
| SK 40 | 18 | 33 | 40 | 50 | 10 | 80 | 13-SHFSK40-18-80 | 75,50 |
| SK 40 | 20 | 33 | 40 | 52 | 10 | 80 | 13-SHFSK40-20-80 | 75,50 |
| SK 40 | 20 | 33 | 40 | 52 | 10 | 120 | 13-SHFSK40-20-120 | 92,50 |
| SK 40 | 20 | 33 | 40 | 52 | 10 | 160 | 13-SHFSK40-20-160 | 108,00 |
| SK 40 | 25 | 44 | 53 | 58 | 10 | 100 | 13-SHFSK40-25-100 | 83,00 |
| SK 40 | 25 | 44 | 53 | 58 | 10 | 120 | 13-SHFSK40-25-120 | 105,70 |
| SK 40 | 25 | 44 | 53 | 58 | 10 | 160 | 13-SHFSK40-25-160 | 115,00 |
| SK 40 | 32 | 44 | 53 | 62 | 10 | 100 | 13-SHFSK40-32-100 | 83,00 |
| SK 40 | 32 | 44 | 53 | 62 | 10 | 160 | 13-SHFSK40-32-160 | 115,00 |